

ONTARIO
**KNOW-HOW
IN ACTION**

BELZONA[®]
GREAT LAKES

018/2021

**GENERAL INDUSTRY
FLOOR
PROTECTIVE COATING**


BELZONA[®]
Repair • Protect • Improve
AUTHORIZED DISTRIBUTOR

THE PROJECT

FLOOR COATING
MAY, 2021

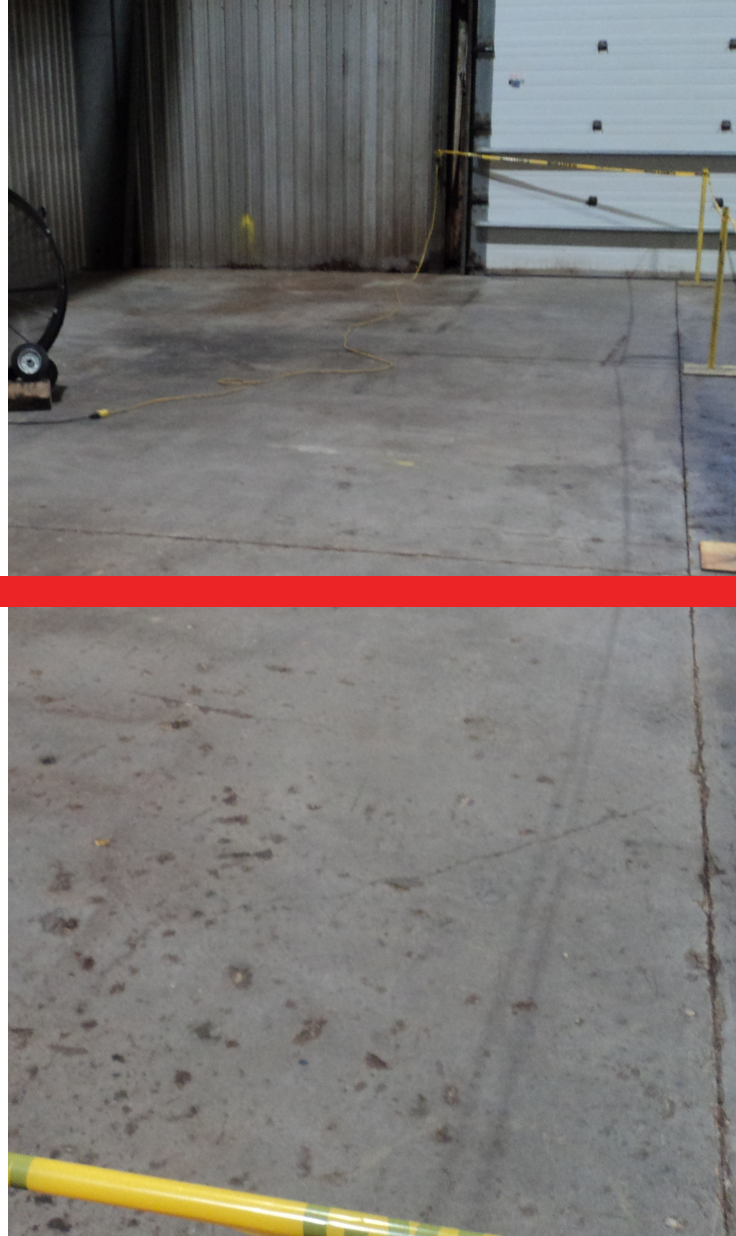
Flooring can be subject to many maintenance issues such as deterioration, wear or chemical attack. All which can cause potential safety hazards and exacerbate other issues.

Central Machine and Marine (CMM), a large full-service machining facility in Sarnia, was experiencing deterioration in their concrete floor. The floor was exposed to constant wet conditions and high traffic. CMM was also planning on installing a new water jet cutting table in this area of the facility.

LONG TERM PROTECTION

CMM was accustomed to use Belzona materials to rebuild and protect their customer's assets with great success. Thus, CMM decided to consult with their Belzona representative to see if Belzona had a product for them.

Belzona 5231 (SG Laminate) was recommended based on its high build solvent free properties. The product can be easily mixed and applied with a roller. The product fast curing properties will allow for fast return to service, reducing downtime.



THE SOLUTION

Belzona 5231 (SG Laminate) is a two component epoxy system that incorporates a non-slip aggregate. This product offers outstanding abrasion resistance, so it is a durable system that provides long term protection.

The application was carried out in accordance with Belzona Know - How System Leaflet FPA-3 for protecting floors. A degreasing agent was used to clean the floor area of any contamination and followed by washing with clean water using a high pressure water blaster and allowing to dry.

IMPROVED SAFETY



Belzona 5231 (SG Laminate) was applied by CMM's applicator, who was supported by the Belzona Technical Consultant.

The product was applied with a short bristle brush along the edges and with a medium nap roller for all other areas in accordance with the Belzona Instructions For Use (IFU).

Belzona 5231 (SG Laminate) provides a seamless, slip resistant solution that can reduce slips further by incorporating additional aggregate. The product allows for light pedestrian traffic after only 4 hours which maintains downtime minimal.